

CON-Line[®] Dongle Tray

Optional accessory for CON-Line media steles

Item no: 2935

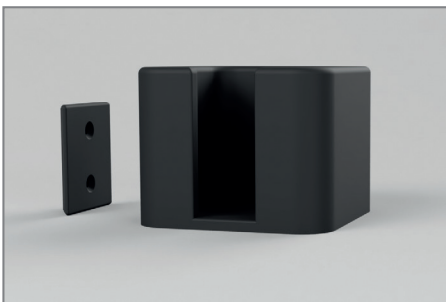
The CON-Line[®] dongle tray is available as an optional accessory and can be used in combination with all CON-Line[®] media steles.

The shelf is mounted on the right side of the media stele. The mounting height can be freely selected as required.

Thanks to the installation using a slide-in profile, installation is very quick and easy.

The dongle holder is made of easy care, black plastic.

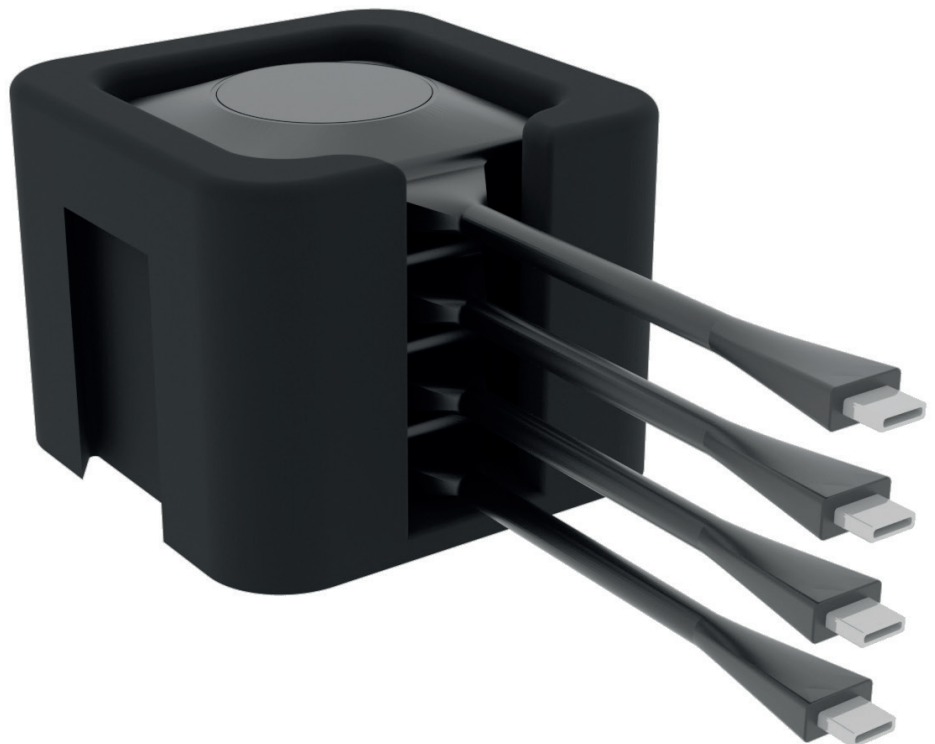
Dongle for presentation systems such as for example Barco ClickShare Button can be stored safely within the CON-Line[®] Dongle Tray on the one hand and are always ready to hand on the other hand.



Easy installation thanks to slide-in profile



Always ready to hand and also safely stored



CON-Line[®] Dongle Tray

Optional accessory for CON-Line media steles

Item no: 2935

- Dongle Tray
 - Suitable for side mounting on all CON-Line[®] media steles
 - Mounting takes place on the right side the media stele
 - Mounting height freely selectable
 - Dimensions: W 90 x H 70 x D 91 mm
- Simple and fast Installation thanks to slide-in profile
 - Dongle, e.g. B. Barco ClickShare Button can be kept safe on the one hand and are on the other hand always ready to hand
 - Material: plastic
 - Color: black

